



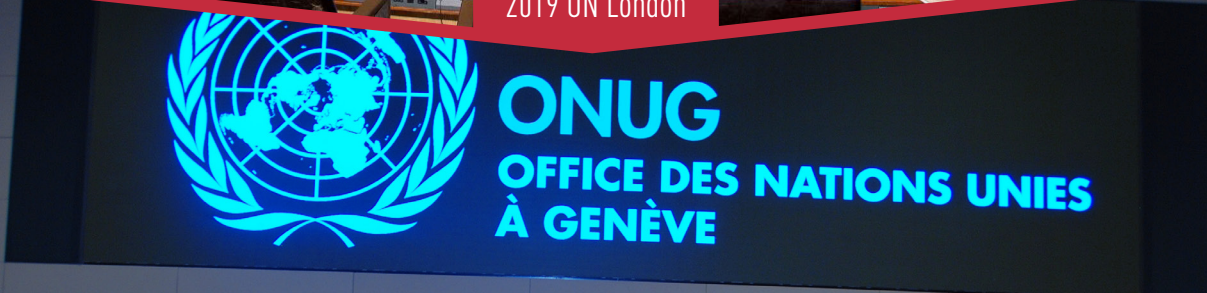
# London Institute of Sustainable Development (LISD)

Advancing Knowledge for a Sustainable Future





2019 UN London



2018 UN Genève



2017 Bahrain



## Welcome to LISD and WASD

It gives me great pleasure to welcome you to the London Institute of Sustainable Development (LISD). Established under the auspices of the World Association for Sustainable Development (WASD), LISD embodies our shared vision of advancing knowledge for a sustainable future.

In a rapidly changing world, education must go beyond the classroom; it must inspire leadership, innovation, and responsibility.

At LISD, we are committed to empowering a new generation of thinkers and practitioners who will shape a fairer, greener, and more inclusive global society.

Our programmes, partnerships, and research are all designed with one purpose - to translate the United Nations (UN) Sustainable Development Goals (SDGs) into meaningful action through knowledge, collaboration, and impact.

As you begin your journey with us, remember that you are not just earning a qualification: you are joining a global movement for sustainable change. Together, we can build the future our world deserves.

Thank you, and welcome to the LISD community.

### Professor Allam Ahmed

PhD MSc BSc (Hons) FFPH FCIM Chartered Marketer

Director and Founder LISD  
Founding President WASD



**Allam** is a Transformative Leader with a track record and reputation of almost **30 years** in the **UK** and across the world, particularly in Africa and the MENA region. He spent 15 years (2004–2019) at the University of Sussex Science Policy Research Unit (SPRU) where he established and led Sussex's most successful postgraduate programme, the MSc International Management. In the period 2009–2011, **Professor Ahmed** led the Government of Abu Dhabi's major and first of its kind in the UAE and MENA region Knowledge Management Initiative (Musharaka). He also provides advisory and consultancy services for many governments across the world such as Saudi Arabia, Qatar, Tunisia, Morocco, Kuwait, Uganda, Bahrain, St Lucia, Sudan, and Egypt, and other governments in Africa, Europe and MENA. He is a Professor of Knowledge Management and Sustainable Development and has published widely, covering various disciplines. He has produced more than 150 publications, including 48 books and numerous articles in international peer-reviewed journals, books, conference proceedings and working papers, all rated as world-leading and internationally recognised. He completed his PhD in Economics in two years at Edinburgh Napier University, UK, and was awarded the Royal Agricultural University Scholarship and Prestigious Book Prize for Best MSc/MBA Dissertation. He is a Fellow (FCIM) and Chartered Marketer of the Chartered Institute of Marketing, and Fellow through Distinction (FFPH) Faculty of Public Health of the Royal Colleges of Physicians of the United Kingdom. **Professor Ahmed** has been listed in the Who's Who in the World since 2009; received the 2021 Who's Who in the World Lifetime Achievement Award; listed in Who's Who in Finance and Business (2009/2010); and Who's Who in America (2012–2014) published by Marquis Who's Who, USA.



# WASD COLLABORATION WITH THE UNITED NATIONS

WASD is delighted to be working very closely with various United Nations Agencies, most specifically with the UN Joint Inspection Unit (JIU). Both JIU and WASD are inspired by the conviction that the UN Agenda 2030 for Sustainable Development (SD) and the 17 SDGs provide the momentum for renewed UN engagement with the public and private sectors.

In 2018, WASD collaborated with JIU on the UN project **Strengthening policy research uptake in the context of the 2030 Agenda for Sustainable Development**, aimed at reviewing the policy research uptake in service of the 2030 Agenda for SD. For the first time in its 52 year history, the UN (aided by WASD) officially consulted academics and researchers from all over the world on the policy research uptake in the UN.

In 2019, WASD also worked very closely with the UN JIU to undertake a UN system-wide review of policies, programmes, and platforms to support learning and enhancing the adequacy of training policies in the UN. The report **Policies and platforms in support of learning: towards more coherence, coordination, and convergence** was launched officially on 28 October 2020 at the opening of WASD's Online Learning Conference.

These various initiatives and events with the UN JIU have encouraged WASD to launch its **Sustainable Development Goals Universities Initiative (SDGsUNi)** and **London Institute of Sustainable Development (LISD)**.



## H. E. Dr Tatiana Valovaya

Director General

United Nations Office at Geneva  
Palais des Nations  
Geneva, Switzerland  
22 July 2024



“

It is a pleasure to open the 22nd World Association for Sustainable Development International Conference. I would like to express my gratitude to WASD for organizing this event at a crucial moment, as we approach the 2030 target. I am particularly pleased to see on the agenda of the conference the emphasis on the vital role of educational institutions in driving forward the implementation of Agenda 2030. Universities and academic institutions are not only centers of learning but also hubs of innovation, research, and community engagement. They play a pivotal role in equipping the next generation with the knowledge and skills needed to achieve sustainable development. ”



SDGsUni initiative aims to bring together universities and research institutions from across the world in a global forum to collaborate and reconnect with the discourse of Sustainable Development (SD) and the UN 2030 Agenda and its 17 SDGs.



الجمعية السعودية  
للإدارة الصحية



**Saudi Society for Health Administration – Saudi Arabia**

Research, Teaching and Capacity Building



جامعة عفت  
EFFAT UNIVERSITY

**Effat University – Saudi Arabia**

Middle East Journal of Entrepreneurship, Leadership and Sustainable Development (MEJELSD)



جامعة المعرفة  
ALMAAREFA UNIVERSITY



مركز الملك سلمان  
للإغاثة والأعمال الإنسانية  
KING SALMAN  
HUMANITARIAN AID & RELIEF CENTRE

**AlMaarefa University & King Salman Humanitarian Aid & Relief Centre – Saudi Arabia**

International Humanitarian Research



**CIFAL Saudi Arabia, United Nations Institute for Training and Research (UNITAR) and Almajmaah University Saudi Arabia**



**King Khaled University Saudi Arabia**

**SAUDI ARABIA**

**SUDAN**



**Sudan University of Science and Technology – Sudan**

UNESCO Chair for Women in Science and Technology



**University of Gezira – Sudan**

Research, Capacity Building and International Journal



**National Centre for Research (NCR) Sudan**

Archive and upload on WASD's Digital Library Environment and Natural Resources International Journal (ENRIJ)





### Al Zaytoonah University - Jordan

Doctoral joint program on Business Administration (DBA)



JORDAN

### GUST

Gulf University for Science & Technology



Gulf University for Science and Technology - Kuwait



### Supreme Council for Planning and Development - Kuwait

Kuwait's National Project for Knowledge Economy (NPKE)

KUWAIT

Confab360Degree Academic Integration

INDIA



Confab 360 Degree - India

GHANA



### Association of African Universities (AAU) - Ghana

African Universities SDGs Initiative



### World University Association for Community Development Indonesia

INDONESIA



### Airlangga University - Indonesia

Research, Capacity Building, Joint International Conference and Journal Special Issues





## **London Institute of Sustainable Development (LISD)** **“Advancing Knowledge for a Sustainable Future”**

It is with great pleasure that we welcome you to the LISD, a global centre of excellence established in 2025 by WASH to advance the UN 2030 Agenda and its 17 SDGs through education, research, and innovation.

At LISD, we see higher education as a catalyst for positive change. Our mission is to develop future leaders and researchers who combine knowledge, creativity, integrity, and a global outlook to drive sustainable transformation across all sectors.

Our postgraduate programmes, PhD, DBA, MBA, and MSc, offer a forward-looking, interdisciplinary learning experience that connects theory with practice. Each programme empowers individuals to think critically, lead responsibly, and contribute meaningfully to global progress.

## **Our Mission**

LISD is a multidisciplinary centre of excellence dedicated to providing transformative, future-focused education that integrates academic rigour with real-world relevance.



## Aims

- Empower students to become globally responsible, sustainability-driven leaders.
- Foster partnerships that advance research, innovation, and policy development.
- Deliver flexible, technology-enabled learning accessible to students worldwide.
- Strengthen institutional and individual capacity for sustainable change.

## Vision

To be a global leader in sustainable education, research, and innovation, recognised for advancing the UN 2030 Agenda and its SDGs through knowledge creation, collaboration, and transformative action.

## Goals

- Integrate sustainability principles across all academic and professional programmes.
- Develop a new generation of ethical, informed, and impact-oriented leaders.
- Strengthen international collaboration between academia, industry, and policy institutions.
- Promote research and innovation that address pressing global challenges such as climate change, inequality, and digital transformation.
- Enhance global capacity for sustainable development through education, training, and consultancy.

LISD brings together a diverse international community of scholars, professionals, and partners committed to inclusive and knowledge-driven development. Supported by world-class faculty, cutting-edge digital tools, and global collaborations, LISD provides a transformative learning experience designed for lasting impact.

## Programmes Offered

- Doctor of Philosophy (PhD)
- Doctor of Business Administration (DBA)
- Master of Business Administration (MBA)
- MBA Sustainability, Leadership and Public Policy
- MBA Advanced Healthcare Leadership
- MBA Islamic Fintech and Sustainability
- MBA Women Leadership and Sustainability
- MBA Digitalisation and Sustainability
- MBA Digital Marketing and Sustainability
- MBA Artificial Intelligence and Sustainability
- MSc Healthcare Leadership
- MSc Obstetric and Gynaecological Ultrasound

LISD's programmes combine academic rigour with practical relevance, integrating the latest research, management insights, and digital innovation. Each pathway is tailored to diverse student interests and career ambitions, preparing graduates to address real-world challenges in SD, governance, and economic growth.



## Why Study with LISD?

- **Globally Relevant Curriculum** – All programmes align with the UN SDGs, ensuring learning is internationally focused and impact-driven.
- **Flexible Study Options** – Hybrid and online delivery designed for working professionals and international learners.
- **Distinguished Faculty** – Learn from leading academics, researchers, and industry experts.
- **International Network** – Join a diverse community of scholars and practitioners from over 40 countries.
- **Publication Opportunity** – Students achieving 70% or above in the Capstone Project may be invited to develop their work for potential publication in a prestigious WASD journal, subject to academic and editorial standards.
- **Recognised Exit Awards** – Benefit from flexible exit points with recognised qualifications: Postgraduate Certificate (60 credits) and Postgraduate Diploma (120 credits).
- **Career Advancement** – Develop advanced leadership capabilities and a global perspective to drive meaningful change across organisations and sectors.
- **Optional UK Industrial Training** – Participate in a one-week practical industrial training programme in the UK arranged by LISD to provide real-world industry exposure and applied learning opportunities. This optional training carries no academic credit.

## Teaching Philosophy

Education at LISD is transformative, innovative, and globally connected. Our pedagogy blends research, technology, and collaboration to foster critical thinking, ethical leadership, and real-world problem solving.

- **Research-Led Learning:** Grounded in global challenges and SDG alignment.
- **Flexible and Inclusive:** Hybrid delivery models for international learners.
- **Collaborative Environment:** Peer learning and interdisciplinary engagement.
- **Global Expertise:** Delivered by academics and professionals with extensive industry and policy experience.

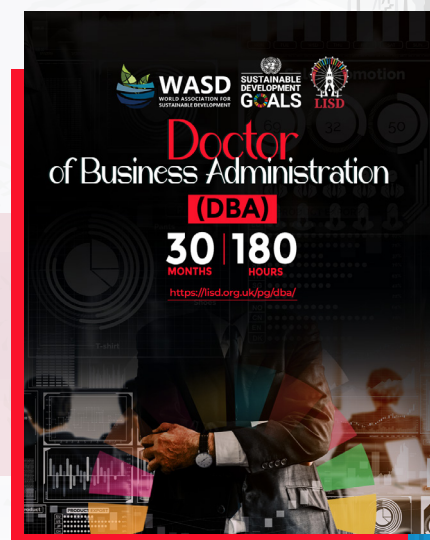
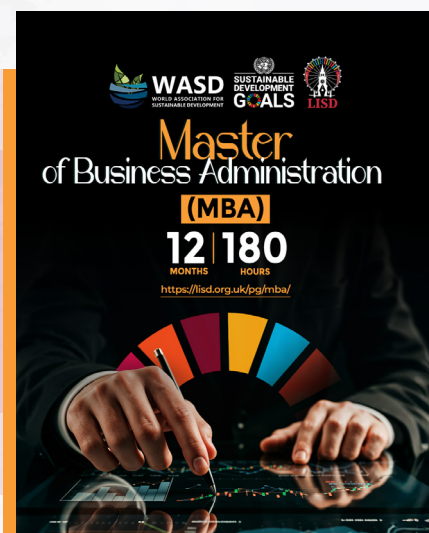
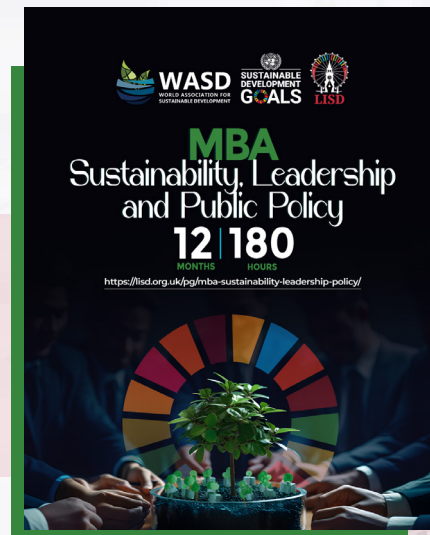
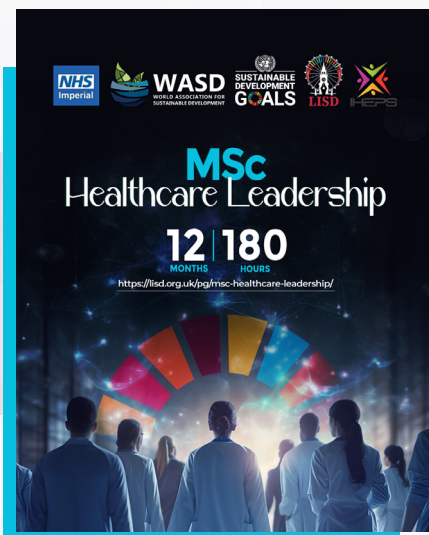
## Teaching Pedagogy

At LISD, our teaching pedagogy is built on the foundation of innovation, flexibility, and practical relevance. We recognise that modern learners, whether recent graduates, working professionals, or returning students, require an education that is not only academically rigorous but also deeply connected to real-world application. Our pedagogical approach reflects this by blending theory with practice and integrating global insights with local relevance.

# Technology-Driven Hybrid Education

At LISD, technology underpins our hybrid teaching model, offering flexible, accessible, and engaging learning for students worldwide. We combine online and on-campus study, blending the convenience of virtual learning with the value of personal interaction. Students benefit from live and recorded lectures, interactive resources, discussion forums, and collaborative tools, supported by email, video conferencing, and face-to-face sessions at our UK study centre. This approach builds a vibrant global community of learners and academics.

Comprehensive e-learning resources, including digital libraries and research databases, support independent study. Our use of open-source and innovative technologies ensures scalable, affordable, and sustainable learning, especially in developing regions. By merging technology with human connection, LISD's hybrid model fosters digital skills, inclusivity, and readiness for the modern knowledge economy.





## Publish your research with us



WASD has established itself as a leading international platform for the dissemination of scholarly research and thought leadership in sustainable development through its distinguished portfolio of peer-reviewed journals and academic publications. For many years, WASD has played a significant role in advancing global understanding of sustainability by publishing high-quality research that explores the interconnected environmental, economic, social, technological, and governance dimensions of sustainable development. Its journals provide an internationally recognised forum for academics, policy-makers, researchers, and practitioners to share innovative ideas, critical analysis, and evidence-based solutions to complex global challenges. Through contributions from authors, reviewers, and editorial board members representing diverse national, cultural, and disciplinary backgrounds, WASD publications foster inclusive global dialogue and promote interdisciplinary approaches to addressing sustainability issues worldwide

In addition to its scholarly journals, WASD delivers comprehensive publishing and editorial services that support the wider academic and professional community, including manuscript development, peer review management, editing, proofreading, typesetting, print and digital publication, and e-book conversion. Publishing in Arabic, English, and French, WASD extends the reach of sustainability scholarship across linguistic and geographic boundaries, reinforcing its commitment to global knowledge exchange and accessibility. Its editorial processes are supported by internationally respected academic committees whose expertise ensures rigorous quality standards and intellectual integrity across all publications. Through these ongoing efforts, WASD continues to strengthen research capacity, encourage policy-relevant scholarship, and contribute meaningfully to the global advancement of sustainable development knowledge, education, and practice.



# Indexing and Ranking

WASD has established itself as a leading international publisher of peer-reviewed journals and academic works, contributing significantly to the global advancement of knowledge in SD and related disciplines. Its journals are widely recognised for their academic quality, interdisciplinary scope, and policy relevance, and are indexed in major international databases and ranking systems, including Scopus (with titles ranked in Q1 and Q2), Web of Science (Emerging Sources Citation Index), and the Australian Business Deans Council (ABDC) Journal Quality List, with additional titles currently undergoing further indexing and evaluation. Through this recognition, WASD continues to strengthen its position as a credible and impactful platform for high-quality scholarly communication.

All WASD publications are disseminated through globally established indexing, abstracting, and digital library systems, ensuring wide accessibility and international visibility for researchers, policy-makers, and practitioners. These include leading platforms such as INSPEC, ReadCube Discover, ABI/INFORM (ProQuest), Cabell's Directory of Publishing Opportunities, Crossref, the British Library, and the Norwegian Centre for Research Data (NSD), as well as ProQuest databases including ProQuest Central, Central Essentials, Central Student, One Academic, ProQuest Research Library Prep, and the ProQuest Premium Collection covering Business, Social Science, and Health Research. Supported by rigorous peer-review processes and internationally diverse editorial boards, WASD publications uphold high academic standards while promoting interdisciplinary dialogue and evidence-based solutions to global sustainability challenges.



WEB OF SCIENCE™

Scopus®





## Digital Resources



WASD is strongly committed to the principles of open access, open science, and open standards, ensuring that research outputs are freely accessible, widely disseminated, and globally impactful. In alignment with leading international publishers and platforms, including Elsevier's open access frameworks and other major scholarly data repositories, WASD promotes equitable access to knowledge by removing barriers to information and enabling researchers, particularly in developing countries, to engage with high-quality academic content. This commitment supports greater visibility, citation impact, and knowledge exchange across disciplines, while contributing to the global movement towards transparent and inclusive research dissemination.

In practical terms, WASD ensures that its conferences, publications, and research outputs are made accessible through digital and open platforms to maximise global reach and usability. All WASD conferences are professionally recorded, edited, and made available through its Video Library and official YouTube Channel, supporting continuous learning and international engagement. In addition, WASD aims to provide conference proceedings and selected publications as open-access resources, freely available for download via its Digital Library. By leveraging modern open-access infrastructures and globally recognised dissemination channels, WASD enhances research accessibility, supports innovation, and strengthens capacity-building efforts worldwide, particularly within emerging and developing economies.



## Consultancy

Consultancy is a professional advisory service through which expert knowledge, strategic insight, and practical solutions are provided to organisations seeking to improve performance, manage change, and address complex challenges. In an increasingly dynamic and interconnected global environment, consultancy plays a vital role in enabling institutions to make informed decisions, strengthen capacity, adopt innovation, and achieve sustainable growth. Drawing on WASD's longstanding commitment to advancing research, policy dialogue, and international knowledge exchange, together with LISD's academic and professional expertise, integrated consultancy services are provided to bridge theory and practice across education, business, government, and development sectors. Through evidence-based advisory support, strategic planning, capacity-building, executive training, digital transformation guidance, and sustainability-focused solutions, WASD and LISD assist organisations in enhancing institutional effectiveness, embedding innovation, and responding proactively to emerging global, technological, and socio-economic challenges.

As part of WASD, the LISD provides a broad range of consultancy and professional training services at doctoral and postgraduate levels. LISD offers numerous consultancy services tailored to the needs of academic institutions, businesses, governments, NGOs, and international organisations, supporting capacity building, strategic development, and institutional transformation. Its customised training programmes equip executives, policy-makers, and professionals with advanced skills in leadership, sustainable business strategy, organisational transformation, and the application of Artificial Intelligence (AI) and digital technologies for sustainability. The Institute also delivers interactive workshops and short courses on SD, SDG implementation, climate policy, social entrepreneurship, and AI-driven decision-making. Through research and advisory services, LISD contributes to knowledge-based economic development, sustainable infrastructure, smart cities, and policy guidance. Leveraging webinars and online learning platforms, LISD delivers Sharable Content Object Reference Model (SCORM)-compliant e-learning programmes in sustainability, leadership, innovation, AI, and digital transformation to support global capacity building. Additionally, LISD provides academic and professional consultancy in curriculum design, executive education, mentorship, and research supervision, integrating sustainability, leadership, AI, and digitalisation into higher education and professional development worldwide.

Our consultancy services cover a broad range of areas, including Digital Transformation, e-Learning, SDGs, Higher Education, Voluntary National Reviews (VNRs), AI, Knowledge Management, Public Health, Diagnostic Radiology, as well as a wide range of other specialised consultancy services.

## For any queries, please contact

**Dr Samar Ahmed**

Co-ordinator for Arab Region  
[samar@wasd.org.uk](mailto:samar@wasd.org.uk)



**Mrs Janet Snow**

International Co-ordinator  
[janet.snow@wasd.org.uk](mailto:janet.snow@wasd.org.uk)





## Training and Capacity Building

**WASD** and all its affiliated partners run regular training and capacity building programmes and workshops on the key factors that influence human development and capacity building; this is essential for transforming countries across the world into advanced, knowledge-based societies led by sustainable innovation and social advancement. Our various packages are designed and delivered by the top and renowned experts from across the world to help countries and regions to diversify their economies and achieve sustainable competitiveness.

## Programme Design

- ✔ Adopts a comprehensive methodology to ensure quality and rigour in pedagogy.
- ✔ Programmes and courses are more than just academic curricula taught by leading subject experts from both academia and industry.
- ✔ Explore leading executive education institutes and the curriculum they are offering; this leads us to contact faculty members at top global universities who match our areas of need.
- ✔ Conduct several short surveys, benchmarking the needs of the target participants and making sure our experts adapt to their needs and learning styles.
- ✔ Review latest business research and CEO voice surveys published by leading global management consultancies to highlight new challenges and general requirement needs.
- ✔ Answer broad industry needs; in many cases, our programmes attempt to solve existing industry dilemmas and prevalent deficiencies that are practiced in organisational settings and render organisations unsuccessful.



## Our Participants

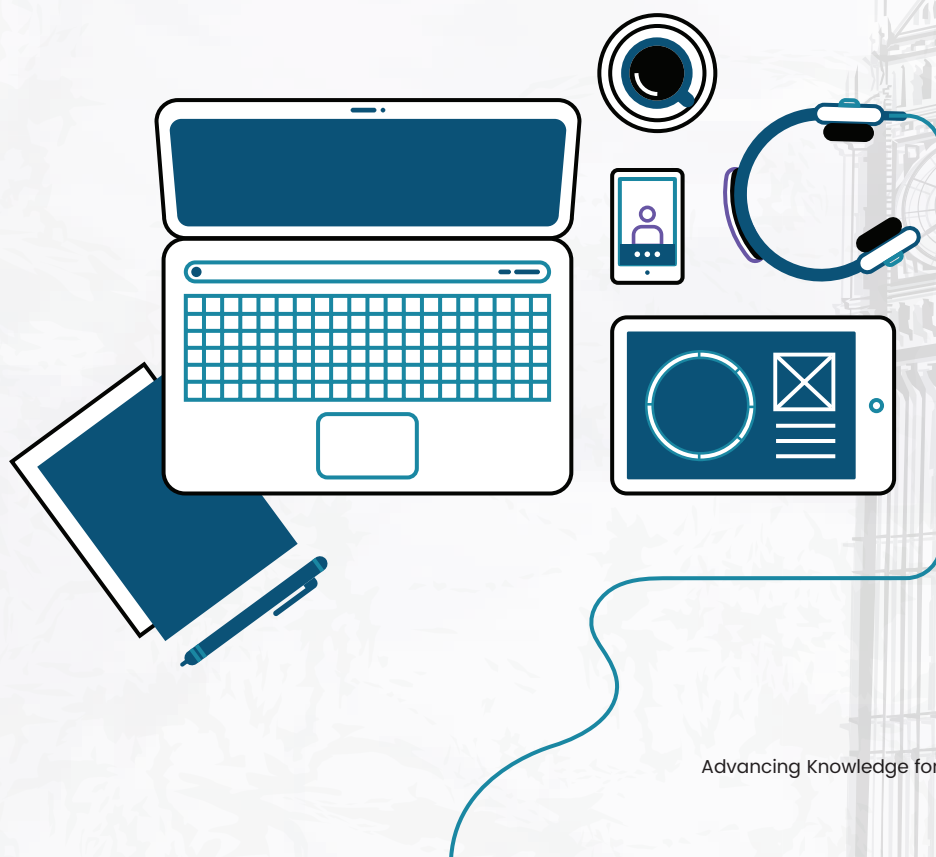
- ✔ Our programmes have attracted top executives from more than 1,000 government agencies and companies around the globe and have attracted over 5,000 participants from more than 40 countries.
- ✔ Our participants include recent graduates, experienced professionals and people who are returning to education after a break.
- ✔ Most of our programmes/courses are delivered to participants world-wide, entirely by distance learning techniques, using online communication, email contact with tutors, supplemented by access to our comprehensive learning resources.

## Courses

In addition to a distance learning mode of delivery, WASD also offers its programmes/courses face-to-face in weekly teaching blocks in the UK or overseas. We provide additional supervision and assessment time designed to fit around your personal and professional commitments. There is also an opportunity for students to complete a higher degree with an advanced standing by gaining exemptions based on units studied on other programmes/courses.

Please browse our various courses ([www.lisd.org.uk/training](http://www.lisd.org.uk/training)) and contact us with your requirements for any training programmes and/or specific courses. The following list includes samples of our most popular courses:

- ✓ Strategic Leadership and Performance Improvement in Higher Education.
- ✓ Entrepreneurship and SMEs Development for Graduates.
- ✓ Innovation and Knowledge Management: Preparing Graduates for the Digital Economy.
- ✓ Artificial Intelligence and Data Science.
- ✓ Artificial Intelligence and Knowledge Management for Future Digital Leaders.
- ✓ Mastering Public Policy for the Implementation of the UN SDGs.
- ✓ Multilateral Diplomacy in the United Nations Matrix.
- ✓ Advanced Healthcare Leadership.
- ✓ Executive Leadership and Performance Improvement for Future Women Leaders.
- ✓ Leadership and management trends in the 21st century: management, finance, and technology.





## World Sustainability Forums

As a **World Leader in Sustainability Conferences and Forums**, WASD has a long experience in organising large conferences and events in the UK and across the world. We have a long history of working with world leading organisations in organising sustainability conferences and other global issues and subjects. We are happy to help all universities organise their conferences and high level events. WASD acts as a meeting platform where participants from all over the world meet each other annually to experience new ideas and cultures, travel and see new places, and learn about all aspects of world SD together with their future colleagues.

WASD conferences consist of sessions of Keynote Speakers, General Assembly, Plenary Sessions, Paper Presentations and Excursions (visits and tours) in the organising country. The objective is to create a fresh knowledge base and provide direction to all participants to effectively deal with future challenges of world sustainable development. The conferences attract large numbers of global experts and scholars in addition to WASD members all over the world. Participants include researchers, policy-makers, educators, experts, consultants and, most importantly, companies focused on the creation and commercialisation of technology.



### H. E. Ambassador Petru Dumitriu

Former Inspector – United Nations Joint Inspection Unit

“

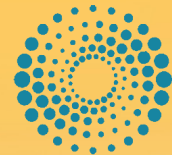
We noted the quality of your annual conferences conceived and organized as fertile formulas of multi-stakeholder partnerships. It is against this background that I would kindly invite you to organize your 2018 16th International Annual Conference in Geneva, at the Palais des Nations. That would allow us to present the work of the Joint Inspection Unit to a broader audience. ”



## Conference Proceedings

WASD will edit all papers submitted prior to the deadline and include them in the conference proceedings, World Sustainable Development Outlook. These proceedings, that have ISBN and ISSN registration numbers, are high-quality publications listed in the **Thomson Reuters Conference Proceedings Citation Index Database/Web of Science Core Collection (CPCI); Clarivate; Scopus; British Library; ABI/Inform (ProQuest); Crossref** and most top universities across the world, such as **Oxford, Harvard, Cambridge**. Our proceedings are also respected all over the world by leading academic and professional bodies such as the World Bank, European Commission, and major universities in the UK (Oxford, Cambridge, London, etc.), USA (Stanford, NY, California), Australia (Queensland, Sydney, Griffith), etc.

### Conference Proceedings Citation Index



THOMSON REUTERS  
WEB OF KNOWLEDGE



This publication focuses on sustainable development with a view to encouraging forward thinking in solving global sustainability problems. Drawing on the expertise of a diverse cultural and national range of contributors, this title boasts its position as a truly global source book. Outlook 2007 examines a number of environmentally-linked subjects from education and knowledge management to climate change and trade and development. The title provides a coherent overview of sustainable development and a holistic approach to finding effective solutions to global issues.

**The Environmentalist, magazine of the IEMA (Institute of Environmental Management & Assessment), 21 July 2008**



2003, 2004, 2008, 2009,  
2012, 2013, 2015, 2016, 2017,  
2018, 2019, 2022, 2023,  
2025, 2026

**University of Brighton - United Kingdom**

*Towards a Sustainable Knowledge-Based Economy in the Middle East and North Africa Conference*

**UNITED KINGDOM**

**Edinburgh Napier University - United Kingdom**

*The Role of Academic Institutions and Societies in Achieving the Millennium Development Goals Conference*



**University of Brighton**



**University of East London**



**INTERNATIONAL MARITIME ORGANIZATION**

**Stockton University - United States**

*Sharing Knowledge Making a Difference: the Role of International Scientific Cooperation Conference*

**UNITED STATES**

2011



2010 **St LUCIA**



**University of West Indies - St Lucia**

*Towards Epistemic Sovereignty: (Re)-Thinking Development in a Changing Global Political Economy Conference*

2015  
**TURKEY**

2014  
**CANADA**

2006  
**ITALY**



### United Nations Office in Geneva - Switzerland

How to accelerate the pace of the Agenda 2030  
Implementation at halfway to its finishing line Conference  
Public Private Partnership for the  
Implementation of Agenda 2030 Conference

#### SWITZERLAND

2018, 2024



### Ahlia University - Bahrain

Digital Revolution, Smart Cities and Performance Improvement Towards  
a Sustainable Knowledge-based Inclusive Development Conference  
The Impact of the Global Financial Crisis on the Environment, Energy  
and Sustainable Development Conference

#### BAHRAIN

2009, 2017



### United Arab Emirates University - United Arab Emirates

Global Competitiveness: a Common Goal  
in a Digital Society Conference

#### U.A.E.

2005, 2012



#### SUDAN

2019, 2020

### Sudan International University - Sudan

Integrating Climate Change into Sustainable  
Development: the Role of Higher Education  
Institutions and Research Centres Conference

#### AUSTRALIA

2007



### Griffith University - Australia

Knowledge Management and Sustainable  
Development in the 21st Century Conference



## LISD Faculty

LISD brings together experts from all over the world to provide participants worldwide with the best scientific and management solutions to achieve sustainable growth and development.



**Ambassador Dr Petru Dumitriu**

Former Ambassador to United Nations  
Joint Inspection Unit  
Switzerland



**Prof. Arshi Naim**

Academic Director  
London Institute of Sustainable Development  
United Kingdom



**Prof. Philip Kotler**

Distinguished Professor of  
International Marketing  
United States



**Dr Gale Rigobert**

Former Minister  
St Lucia



**Prof. Rocky Dwyer**

Walden University  
United States



**Prof. Liisa Laakso**

Nordic Africa Institute  
Finland



**Prof. Manuel Frutos-Perez**

Cambridge Education Group Digital  
United Kingdom



**Miryem Salah**

Director Digital Data & AI  
Transformation VodafoneThree  
United Kingdom



**Prof. Michael Busler**

Stockton University  
United States



**Dr Andrew Murray**

Antelope Health  
United Kingdom



**Prof. Intisar Soghayroun**

Former Minister  
Sudan



**Dr Emad AlJaaly**

Imperial College Healthcare  
NHS Trust  
United Kingdom



**Dr Joyce Capelli**

Instituto Melhores Dias  
Brazil



**Philip Luce**

Cromwell Hospital  
United Kingdom



**Dr Nisrine Slitine**

Institute of Advanced Paramedical  
and Health Studies  
Morocco



**Dr Ihab Tewfik**

University of Westminster  
United Kingdom



**Dr Manal Elnour**

SMC Healthcare Hospital  
Saudi Arabia



**Dr Mohamed Hassan-Sayed**

University of Southampton  
United Kingdom



**Prof. Luisa Maure**

Universidad de Panama  
Panama



**Dr Andrew Chukwuemeka**

Imperial College Healthcare  
NHS Trust  
United Kingdom



**Dr Malgorzata Sulimierska**

University of Sussex  
United Kingdom



**Prof. Roubina Juwaheer**

Former Pro Vice-Chancellor  
University of Mauritius  
Mauritius



**Dr Khalid Hasan**

CEO ResInt Canada  
Canada



**Dr Muna Abdel Aziz**

Former Director of Public Health  
Manchester  
United Kingdom



**Prof. Nassr Ahmad**

Libyan Open University  
Libya



**Prof. Hongmei (Mary) He**

University of Salford  
United Kingdom



**Prof. Muhammad Aziz Rahman**

Federation University  
Australia



**Prof. Doaa Salman**

October University for  
Modern Sciences and Arts  
Egypt



**Dr Rawad Hammad**

University of East London  
United Kingdom



**Prof. Lynette Louw**

Rhodes University  
South Africa



**Prof. Dhiya Al-Jumeily OBE**

Liverpool John Moores University  
United Kingdom



**Dr Mayada Abu Afian**

Director of Public Health  
United Kingdom



**Prof. Joseph Ntayi**

Makerere University  
Uganda



**Prof. John Adams**

Herriot-Watt University  
United Kingdom



**Prof. Beverlee B. Anderson**

California State University San Marcos  
United States



**Prof. Ronald McQuaid**

University of Stirling  
United Kingdom



**Prof. Seema Joshi**

University of Delhi  
India



**Dr Adil Dafa'Alla**

Airbus UK  
United Kingdom



**Claire Hook**

Imperial College Healthcare NHS Trust  
United Kingdom



**Prof. Jerry Kolo**

American University of Sharjah  
United Arab Emirates



**Prof. Andrea Santiago**

De La Salle University  
Philippines



**Dr Ondřej Dvouletý**

Prague University of Economics  
& Business  
Czech Republic



**Samia Melhem**

Global Lead Digital Development  
World Bank  
United States



**Dr. Christian Ehiobuche**

Stockton University  
United States

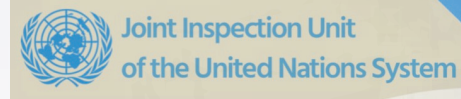


**Prof. Caroline Ayad**

Sudan University of Science &  
Technology  
Sudan



# Networks and Partners





Cairo University



CENTER for MEDITERRANEAN INTEGRATION | CENTRE pour l'INTEGRATION en MEDITERRANEE  
مركز التكامل المتوسطي



UNIVERSITÀ DEGLI STUDI DI NAPOLI  
FEDERICO II



palgrave macmillan



United Nations Educational, Scientific and Cultural Organization



YOUTH GLOBAL FORUM



شعوب متمكنة.  
أمم صاعدة.



الجمعية السعودية للإدارة الصحية SS:IA





[www.lisd.org.uk](http://www.lisd.org.uk)



[www.linkedin.com/company/lisd-uk/](https://www.linkedin.com/company/lisd-uk/)



[@WASD\\_news](https://twitter.com/WASD_news)



[WASD youtube](https://www.youtube.com/WASD)



[worldassociationSD](https://www.facebook.com/worldassociationSD)



[www.wasdtv.org](http://www.wasdtv.org)



[www.arabuniversities.org](http://www.arabuniversities.org)



[www.sdgsuniversities.org](http://www.sdgsuniversities.org)



[www.africanuniversities.org](http://www.africanuniversities.org)



[www.arabwhoswho.org](http://www.arabwhoswho.org)



[www.sdgswhoswho.org](http://www.sdgswhoswho.org)



[www.africawhoswho.org](http://www.africawhoswho.org)



[www.sdgstracker.org](http://www.sdgstracker.org)



[www.womanuniversities.org](http://www.womanuniversities.org)



[www.mekei.org](http://www.mekei.org)



[www.sudanknowledge.org](http://www.sudanknowledge.org)



[www.womenwhoswho.org](http://www.womenwhoswho.org)



[www.diasporawhoswho.org](http://www.diasporawhoswho.org)